

# Analyze services for AECO



Hexagon Multivista's Analyze services include advanced, automated solutions for building progress reporting, deviation analysis, and earthwork progress reporting that have been specifically designed for general contractors and project owners. By utilizing reality capture data, Hexagon's proprietary technology, and real insights from industry experts, Hexagon Multivista delivers highly accurate insights into project status and performance.

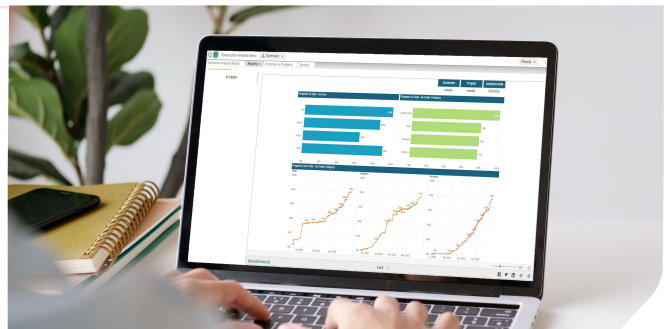
This eliminates reliance on manual, error-prone methods that are often costly and time-consuming. The solutions streamline construction project management by providing detailed, actionable reports that help identify schedule and quality deviations early, enabling faster decision-making. With our Analyze services, construction teams can reduce delays, lower costs, and enhance overall project efficiency, ensuring smoother execution and timely delivery.

## Analyze service deliverables

Explore key deliverables and project support available across our services.

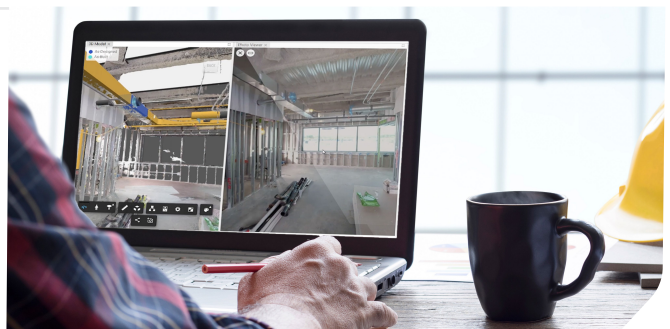
### Building progress reporting

- Meaningful progress data extracted from 360° photos by comparing to 3D models
- Planned vs. actual performance visibility by trade (S-curves)
- Automated progress-to-date reporting based on 360° photos compared to models and schedules



### Deviation analysis

- Digitally detect and track construction deviations throughout construction
- Proactively detect future building system clashes to reduce multi-trade rework and delays
- Record acceptable field deviations to guide updates to as-built models for owner handover



### Earthwork progress reporting

- Use drones and to monitor earthwork progress accurately
- Calculate cut-and-fill volumes for efficient resource management
- Produce straightforward reports with actionable insights for stakeholders

