



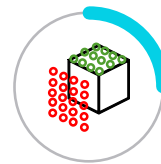
Visual
Progress



Building
Progress
Reporting



Earthwork
Progress
Reporting



Deviation
Analysis

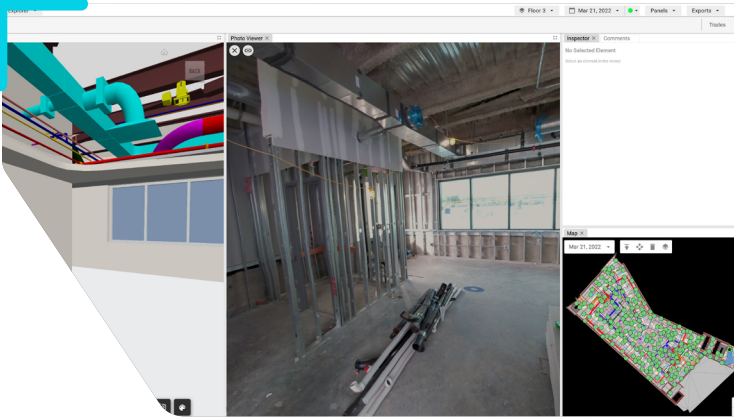


Firestopping
Analysis

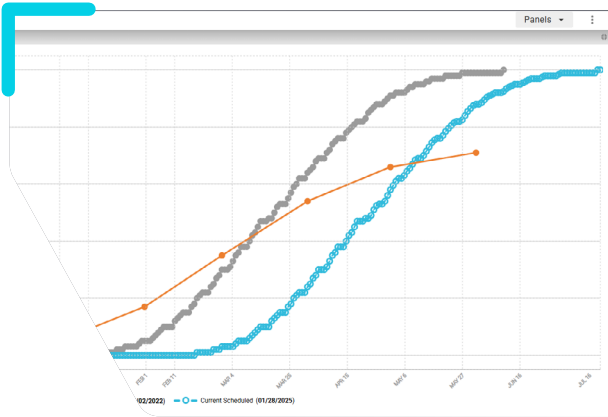
ANALYZE Services for AECO

Hexagon's Analyze services include advanced, automated solutions for visual progress, progress reporting, and deviation analysis that have been specifically designed for General Contractors (GCs) and project owners. By utilizing reality capture data, Hexagon's proprietary technology, and real insights from industry experts, it delivers highly accurate insights into project status and performance. This eliminates reliance on manual, error-prone methods that are often costly and time-consuming. The solutions streamline construction project management by providing detailed, actionable reports that help identify schedule and quality deviations early, enabling faster decision-making. With Construction Analysis, construction teams can reduce delays, lower costs, and enhance overall project efficiency, ensuring smoother execution and timely delivery.

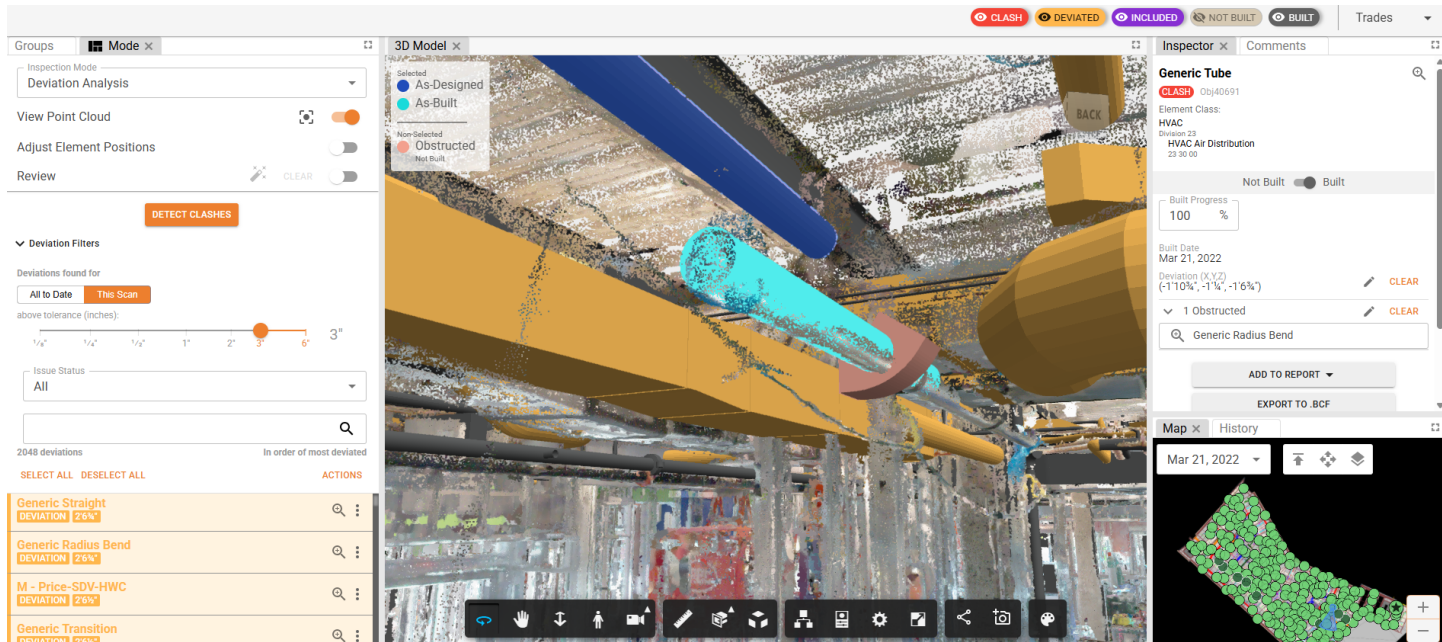
ANALYZE Service Deliverables



Visual Progress – 360 Photo and Model Compare



Building Progress Reporting



Deviation Analysis – Automated laser scan to model tolerance checking



Earthwork Progress Reporting



Firestopping Analysis